

ThinkPad X1 Carbon Gen 12

Introducing the next-gen ThinkPad X1 Carbon - featuring powerful Intel® Core™ Ultra processors, designed to enhance graphics performance and elevate AI capabilities. Compared to its predecessors, integrated Intel® Arc Graphics deliver 2x performance boost, ensuring seamless workflows, enriched visual experience, and maximum encoding speed without any slowdown. Experience optimized performance with 40% lower SoC power consumption, leading to more productivity on a single charge with a 57 Whr battery, and a cooler, quieter PC during extended work sessions.



Redefining possibilities with powerful performance and groundbreaking on-device AI

ThinkPad X1 series laptops are chosen by professionals for their durability, portability, and powerful performance. With high-resolution displays, robust processors, and extensive connectivity options, they excel in productivity tasks.

Supercharge your work efficiency with its cutting-edge Computer Vision technology. The innovative Face Sensing feature activates the laptop upon detecting enrolled users in its range. Coupled with the high-performance 8MP camera and the low-light video enhancement feature, enjoy crisp and clear visuals in any lighting situation, ensuring optimal virtual collaborations.

Experience the synergy of form and function with the premium 14" screen boasting an impressive 89.20% screen-to-body ratio and 2.8K OLED display option. The expansive display ensures a more immersive visual experience, while the minimal bezel design with premium aesthetics maximizes viewing area with minimum distractions.

Enhance video conferencing with the high-quality 8MP camera with low-light enhancements, ensuring superior clarity. Furthermore, the auto-framing feature ensures you remain perfectly centered in meetings, while background blur minimizes distractions.



The highest performance notebook

Elevate your professional prowess with this laptop that integrates AI-accelerated experiences, performance, and reliability effortlessly. The revolutionary Intel Meteor Lake architecture delivers up to 2x graphics performance, running tasks independently and servicing AI workloads for a responsive user experience. Moreover, a 42% larger thermal capability ensures sustained performance during prolonged work sessions without overheating.

Personalized Control

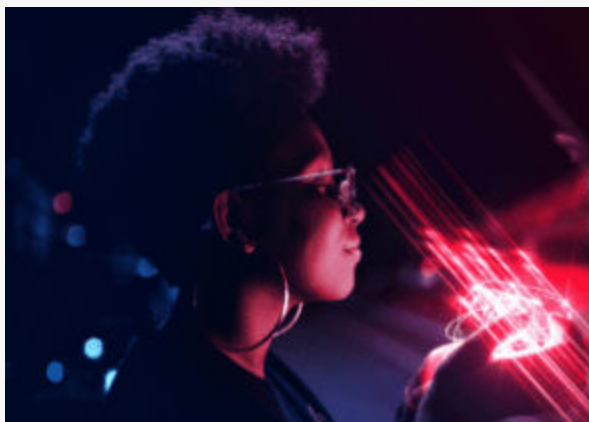
The redesigned keyboard with tactile markings aids in typing accuracy and facilitates exact maneuvering for the visually impaired. The enhanced TrackPad with an optional Haptic TouchPad offers precise and controlled navigation with AI tuning and enhanced palm rejection algorithm, contributing to a more intuitive computing experience.

Seamless Functionality

The Flip to Start feature ensures quick access to the notebook, allowing swift startups during busy workdays. Additionally, fingerprint authentication is now on the keyboard, offering a secure login experience while also enhancing accessibility.

Redefining Minimalism

Designed for optimal functionality, the sleek body of the laptop boasts a minimal iconic silhouette, embodying sophistication without unnecessary visual complexity. The introduction of a new logo, elegantly debossed, ensures a smooth and distraction-free typing experience.



Built consciously for a sustainable future

Lenovo provides smarter technology that contributes to a sustainable future for customers, colleagues, communities, and the planet. As a global technology powerhouse, we are committed to achieving net-zero greenhouse gas emissions by 2050 with targets validated by Science Based Targets initiative.



Recycled or sustainable product materials

Lenovo is focused on integrating sustainable materials and minimizing waste through innovative product and packaging design. Incorporating substantial recycled content such as magnesium, aluminum, and postconsumer recycled content (PCC) in manufacturing contributes to a circular economy while reducing carbon footprint.

- Use of recycled materials (90% recycled magnesium C cover & 55% recycled aluminum + 45% hydro aluminum D cover)
- PCC in plastic parts



Recycled shipping/packaging content

Lenovo reduces its overall carbon footprint by integrating bio-based materials like bamboo and sugarcane into laptop packaging, ensuring it is 100% rapidly renewable. Our commitment to sustainability is reflected in our zero plastic packaging solutions across products, including the latest X1 Carbon.

- Made from 100% recyclable bamboo and sugarcane
- FSC Certified Plastic Free Packaging



Product PCC

85% PCC Plastic Key Caps,
90% PCC in Plastic
Speaker, Battery Pack
Enclosure, & AC Adapter,
30% PCC Plastic Cable
Holder

Asset Recovery Service (ARS)

Lenovo's Asset Recovery Services (ARS) enables secure destruction of data, with minimum impact on the environment and a fair financial return. The service also supports equipment from any manufacturer including PCs & tablets, monitors, servers, phones, printers, copiers and networking equipment.

Lenovo TruScale DaaS

TruScale Device as a Service is a fully managed subscription-based model that offers access to a complete portfolio of hardware (including workstations, laptops, tablets, and phones), software, and trusted services with a flexible payment approach with consistent solutions and a predictable, transparent fee.

Lenovo CO2 Offset Services

Lenovo's Co2 Offset Service makes offsetting carbon emissions simple and within the control of the customer. We offset the carbon emissions associated with each of our devices by providing the option at point of purchase, ensuring we do our part toward reducing the overall carbon footprint.

Lenovo Services

Lenovo delivers tailored sustainability services, devices, and infrastructure solutions from our broad portfolio, working closely with you to support your target outcomes across the IT lifecycle..



Accessories

Lenovo USB-C Dual Display Travel Dock

- Enhanced connectivity and visual experience in a portable hub
- Continuous power supply; efficient charging solution for mobile devices
- Eco-friendly dual display travel dock; style meets sustainability



PN: Dock without Adapter : 40B90000WW, Dock with Adapter : 40B90100xx

Lenovo Go Wireless Multi-Device Mouse

- Compact ambidextrous design, programmable Utility Button on the side, default functions optimized for Teams calls
- Connects to up to 3 devices via 1x USB-C dongle, 2x Bluetooth 5.0; quick switch button to jump control across devices
- Comes with a blue optical sensor that tracks on most surfaces and wireless Qi or wired USB-C fast-chargeable battery



PN: 4Y51C21217

ThinkPad X1 Carbon Gen 12

Performance

Processor

Intel U or H Series Core Ultra 5 / 7 Processor (Series 1)

AI PC Category*

AI PC

Operating System*

Windows 11 Pro or Home
Windows 11 DG Windows 10 Pro
Fedora or Ubuntu Linux

NPU*

Integrated Intel AI Boost, up to 11 TOPS

Graphics

Intel Graphics (integrated)
Intel Arc Graphics (integrated)

Memory

16GB LPDDR5x-6400, soldered
32GB LPDDR5x-6400, soldered
64GB LPDDR5x-6400, soldered

Storage¹

Up to 1x 2TB M.2 2280 PCIe NVMe SSD

¹The storage capacity supported is based on the test results with current Lenovo storage offerings.

Audio*

High Definition (HD) Audio
Stereo speakers, 2W x2, Dolby Atmos
Dual-microphone array, far-field, Dolby Voice

Camera*

FHD 1080p + IR discrete, with privacy shutter, temporal noise reduction
UHD 8.0MP + IR discrete, with privacy shutter, MIPI, Computer Vision, temporal noise reduction

Battery^{2 3}

57Wh (up to 16.0 hr) battery, Rapid Charge

²Battery life claims are approximate maximum. Actual result will vary depending on many factors and the maximum battery capacity will decrease with time and use.

³Rapid charge is only guaranteed when the computer is turned off or in standby mode or in hibernation mode.

Power Adapter*

45W USB-C adapter, PD 3.0
65W USB-C adapter, PD 3.0
65W USB-C slim adapter, PD 3.0

Design

Display⁴

14" WUXGA (1920x1200) IPS Anti-glare 16:10
- 400nits, 100% sRGB, low power, Eyesafe
- 400nits, 100% sRGB, low power, on-cell touch, Eyesafe
- 500nits, 100% sRGB, ThinkPad Privacy Guard, Eyesafe
14" 2.8K (2880x1800) OLED AGARAS 16:10
- 400nits, 100% DCI-P3, DisplayHDR True Black 500, Dolby Vision, Eyesafe
- 400nits, 100% DCI-P3, DisplayHDR True Black 500, Dolby Vision, Add-on Film touch, Eyesafe

⁴IPS (in-plane switching) technology may refer to IPS, PLS, ADS, AHVA, AAS.

Screen-to-Body Ratio

89.2%

Keyboard

6-row, spill-resistant, air intake design, backlight

Touchpad

TrackPoint and glass surface Haptic Touchpad
70.5 x 120 mm (2.78 x 4.72 inches)
TrackPoint and glass surface 3-button Trackpad
56.2 x 120 mm (2.21 x 4.72 inches)

Dimensions⁵

312.80 x 214.75 x 14.96 mm (12.31 x 8.45 x 0.59 inches)

⁵The system dimensions may vary depending on configurations.

Weight⁶

Starting at 1.08 kg (2.37 lbs)

⁶The system weight is approximate and may vary depending on configurations

Color

Black, paint
Black, weave

Case material

Carbon fiber (top), aluminium (bottom)

Connectivity

WLAN + Bluetooth*⁷

802.11ax (Wi-Fi 6E) or 802.11be (Wi-Fi 7), Bluetooth 5.3
Up to Intel Wi-Fi 7 BE200, 802.11be, Bluetooth 5.3

⁷Wi-Fi 6E and Wi-Fi 7 are only enabled on Windows 11 and operates as Wi-Fi 6 with Windows 10. Bluetooth 5.3 operation requires Windows 11.

WWAN*

4G LTE CAT16 with embedded eSIM
5G Sub-6 GHz with embedded eSIM

NFC

Near Field Communication*

Ports

1x USB-A (USB 5Gbps / USB 3.2 Gen 1)
1x USB-A (USB 5Gbps / USB 3.2 Gen 1), Always On
2x USB-C (Thunderbolt 4 / USB4 40Gbps), with USB PD 3.0 & DP 2.1
1x HDMI 2.1, up to 4K/60Hz
1x Headphone / microphone combo jack (3.5mm)
1x Nano-SIM card slot (WWAN support models)*

Docking

Docking support via Thunderbolt or USB-C

Security & Privacy

Security

ThinkShield
Discrete TPM 2.0
Kensington Nano Security Slot
Touch style MOC fingerprint reader
Camera privacy shutter
IR camera for Windows Hello (facial recognition)
Privacy Guard with Privacy Alert*
Computer Vision-based Human Presence Detection (UHD 8.0MP models)*
Ultrasonic Human Presence Detection (FHD 1080p models)*

Manageability

System Management*⁸

Intel vPro Enterprise*

⁸Intel vPro offers a superset of DASH's defined capabilities.

Environmental

Material

Recycled carbon fiber contained in plastic frame on top cover
90% recycled magnesium on keyboard frame
55% recycled aluminium and 45% hydro aluminum or bottom cover
85% PCC recycled plastic used in keycaps
90% PCC recycled plastic used in speaker enclosure
90% PCC recycled plastic used in the 57Wh battery pack enclosure
90% PCC recycled plastic used in standard 45W and 65W adapters
Low-temperature solder
FSC certified plastic free packaging
Bamboo + sugarcane retail packaging / standard cushions